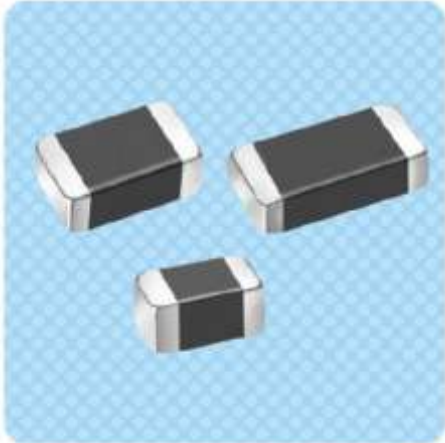


NT Series Chip Temperature Sensing NTC Thermistor



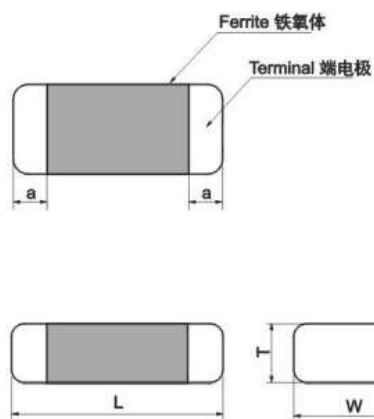
FEATURES

- SMD type suitable for high density mounting.
- Series of B constant for various applications.
- Excellent solderability.
- Operating temperature range: $-55^{\circ}\text{C} \sim 125^{\circ}\text{C}$

APPLICATIONS

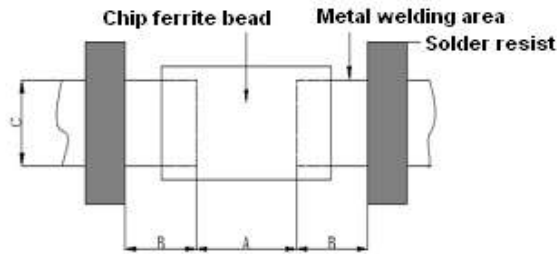
- Telecommunication equipments such as cellular phone, automobile phone, cordless phone, etc.
- Consumer electronics such as VCR, DVD, CD players, etc.

SHAPE AND DIMENSIONS



Part Number	Dimensions (mm)			
	L	W	T	a
NT1005	1.0±0.15	0.5±0.15	0.5±0.15	0.25±0.1
NT1608	1.6±0.15	0.8±0.15	0.8±0.15	0.3±0.2
NT2012	2.0±0.2	1.2±0.2	0.8±0.2	0.5±0.3

RECOMMENDED PC BOARD PATTERN



Part Number	Dimensions (mm)		
	A	B	C
NT1005	0.35	0.6	0.6
NT1608	0.6	1.0	0.8
NT2012	1.0	1.0	1.0

PRODUCT IDENTIFICATION

NT 1608 S 103 J 3380 H T (f)
 ① ② ③ ④ ⑤ ⑥ ⑦ ⑧ ⑨

- ① Series name
- ② Dimensions L×W
1608: 1.6mm of length, 0.8mm of width.
- ③ Material code
- ④ Zero power Resistance: 222-2200Ω , 101-100Ω
- ⑤ Tolerance: H: ±3% J:±5% K: ±10%
- ⑥ B constant (25°C-50°C);
- ⑦ B constant of Tolerance: H: ±3%
- ⑧ Package: B:by bulk T: Tape and Reel
- ⑨ Pb Free

SPECIFICATIONS

● NT1005 TYPE

Part Number	Resistance at 25°C (KΩ)	B Constant 25-50°C (K)	Thermal Time Constant (s)	Rated Electric power (mW)	Dissipation Factor (mW/°C)	Operating Temperature (°C)
NT1005S220□3100H	0.022	3100	<3sec	100	1.0	-40—125
NT1005S440□3100H	0.040					
NT1005S101□3100H	0.10					
NT1005S151□3600H	0.15	3600				
NT1005S221□3600H	0.22					
NT1005S331□3600H	0.33					
NT1005S471□3600H	0.47					
NT1005S681□3600H	0.68					
NT1005S102□3950H	1.0	3950				
NT1005S152□3950H	1.5					
NT1005S222□3950H	2.2					
NT1005S332□3950H	3.3					
NT1005S472□3950H	4.7					
NT1005S682□3950H	6.8					
NT1005S103□3450H	10	3450				
NT1005S153□4100H	15	4100				
NT1005S223□4100H	22					
NT1005S333□4100H	33					
NT1005S473□4100H	47					
NT1005S503□4100H	50					
NT1005S683□4350H	68	4350				
NT1005S104□4350H	100					
NT1005S154□4150H	150	4150				
NT1005S224□4250H	220	4250				
NT1005S334□4250H	330					
NT1005S474□4250H	470					



Specifications subject to change without notice. Please check our website for latest information.

Tel: 0086-769-85016657 Fax: 0086-769-85016658 E-Mail: sales@ZXcompo.com www.zxcompo.com

● NT1608 TYPE

Part Number	Resistance at 25°C (KΩ)	B Constant 25-50°C (K)	Thermal Time Constant(s)	Rated Electric power (mW)	Dissipation Factor(mW/°C)	Operating Temperature(°C)
NT1608S101□3600H	0.10	3600	<5sec	100	1.0	-40—125
NT1608S151□3600H	0.15					
NT1608S221□3600H	0.22					
NT1608S331□3600H	0.33					
NT1608S471□3600H	0.47					
NT1608S681□3600H	0.68					
NT1608S102□3950H	1.0	3950				
NT1608S152□3950H	1.5					
NT1608S222□3950H	2.2					
NT1608S332□3950H	3.3					
NT1608S472□3950H	4.7					
NT1608S682□3950H	6.8					
NT1608S103□3450H	10	3450				
NT1608S103□3950H	10	3950				
NT1608S153□4100H	15	4100				
NT1608S333□4100H	33					
NT1608S473□4100H	47					
NT1608S503□4100H	50					
NT1608S683□4150H	68	4150				
NT1608S104□4150H	100					
NT1608S154□4250H	150	4250				
NT1608S224□4250H	220					
NT1608S334□4250H	330					
NT1608S474□4250H	470					



Specifications subject to change without notice. Please check our website for latest information.

Tel: 0086-769-85016657 Fax: 0086-769-85016658 E-Mail: sales@ZXcompo.com www.zxcompo.com

● NT2012 TYPE

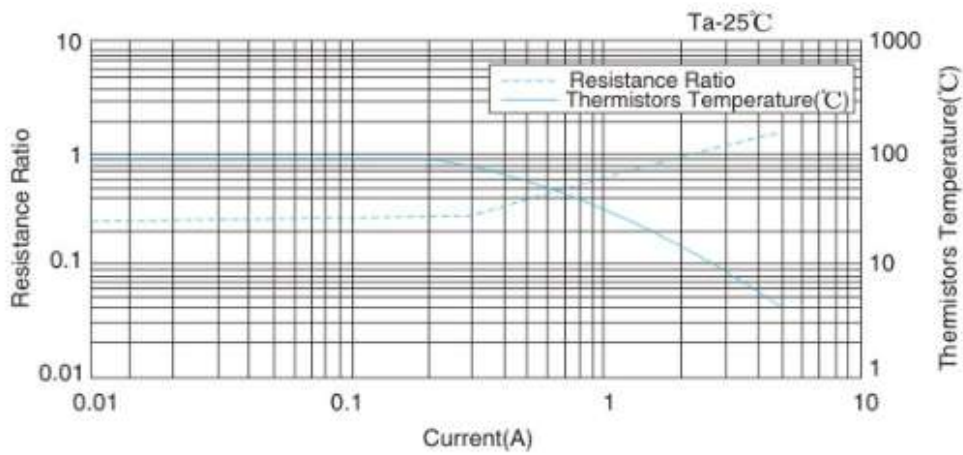
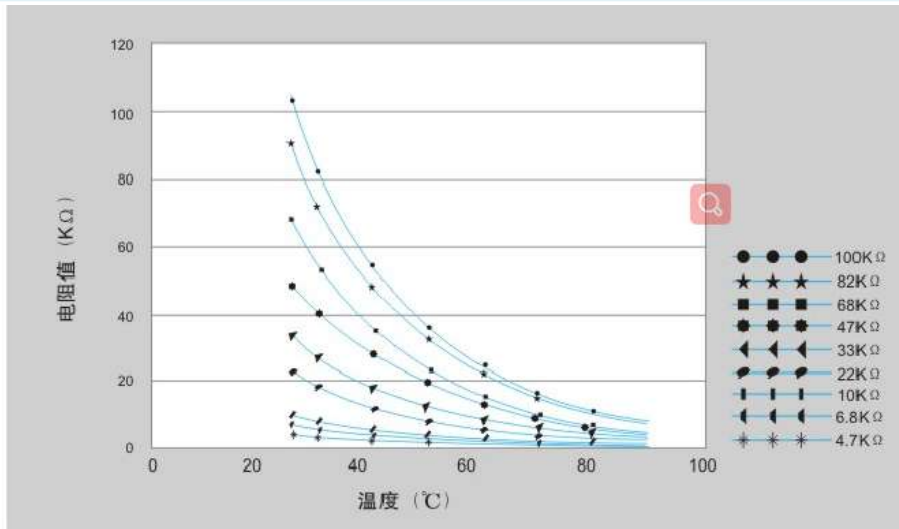
Part Number	Resistance at 25°C (KΩ)	B Constant 25-50°C (K)	Thermal Time Constant(s)	Rated Electric power (mW)	Dissipation Factor(mW/°C)	Operating Temperature(°C)
NT2012S101□3600H	0.10	3600	<5sec	200	2.0	-40—125
NT2012S151□3600H	0.15					
NT2012S221□3600H	0.22					
NT2012S331□3600H	0.33					
NT2012S471□3600H	0.47					
NT2012S681□3600H	0.68					
NT2012S102□3950H	1.0	3950				
NT2012S152□3950H	1.5					
NT2012S222□3950H	2.2					
NT2012S332□3950H	3.3					
NT2012S472□3950H	4.7					
NT2012S502□3950H	5.0					
NT2012S682□3950H	6.8	3500				
NT2012S103□3450H	10					
NT2012S103□3950H	10	4100				
NT2012S153□4100H	15					
NT2012S223□4100H	22					
NT2012S333□4100H	33	4000				
NT2012S473□4000H	47					
NT2012S503□4000H	50	4150				
NT2012S683□4150H	68					
NT2012S104□4250H	100	4250				
NT2012S154□4250H	150					
NT2012S224□4250H	220					
NT2012S334□4250H	330					
NT2012S474□4250H	470					
NT2012S684□4300H	680		4300			



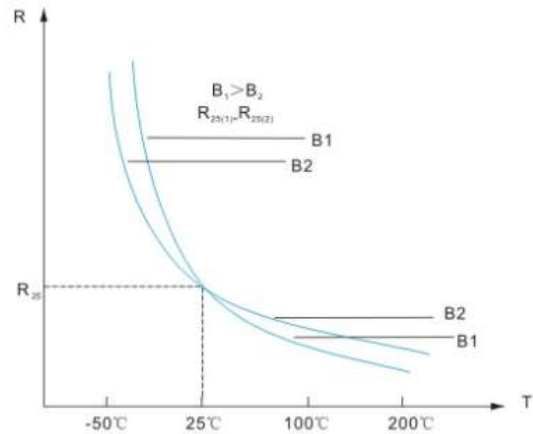
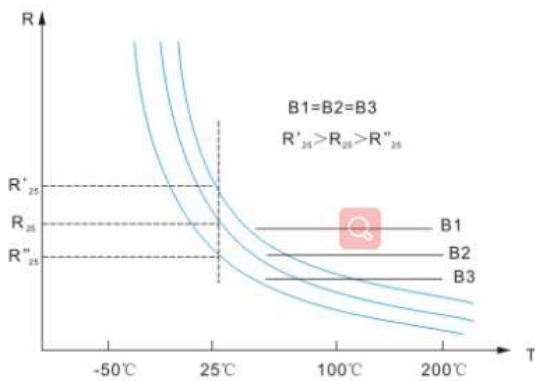
Specifications subject to change without notice. Please check our website for latest information.

Tel: 0086-769-85016657 Fax: 0086-769-85016658 E-Mail: sales@ZXcompo.com www.zxcompo.com

DETAIL ELECTRICAL CHARACTERISTICS



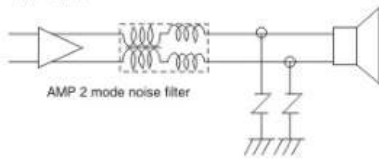
$$R = R_0 \exp \left\{ \frac{B}{T - T_0} \right\}$$



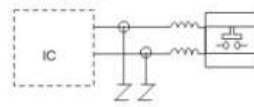
Applications

Mobile Phone

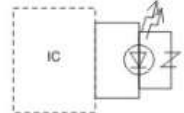
Audio lines



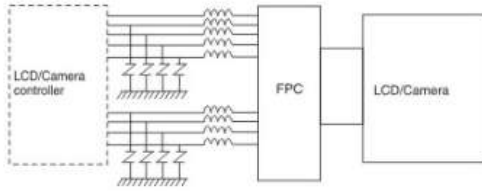
SW / Keyboard



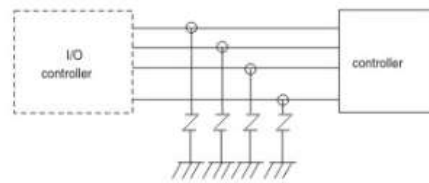
LED



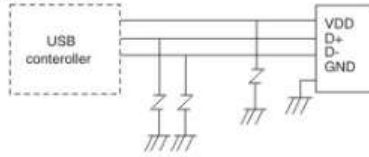
LCD?/ Camera lines



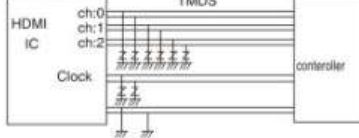
I/O data lines



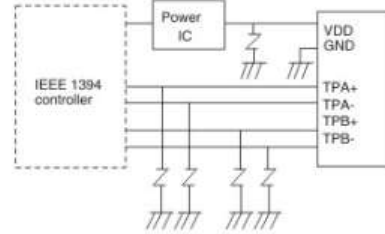
USB1.1/2.0 lines



HDMI line



IEEE 1394 lines



Z-Chip varistor