

Test Report

Report No. A2230061776101006

Page 1 of 9

Company Name SHENZHEN ZXCOMPO ELECTRONICS CO., LIMITED
shown on Report
Address 2F 1F/C3,3F,4F,6F B2, ZHENHUA INDUSTRY ZONE BULIDING,NO.64, HEPING ROAD,QINGHUA COMMUNITY, LONGHUA STREET, LONGHUA DISTRICT, SHENZHEN, GUANGDONG, P.R.C.

The following sample(s) and sample information was/were submitted and identified by/on the behalf of the applicant

Sample Name CB/PB/LPB
Sample Received Date Feb. 21, 2023
Testing Period Feb. 21, 2023 to Feb. 24, 2023

Test Requested As specified by client, to test Lead (Pb), Cadmium (Cd), Mercury (Hg), Hexavalent Chromium (Cr(VI)), Polybrominated Biphenyls (PBBs), Polybrominated Diphenyl Ethers (PBDEs), Phthalates (DBP, BBP, DEHP, DIBP), Fluorine (F), Chlorine (Cl), Bromine (Br), Iodine (I), Phthalates in the submitted sample(s).

Test Method/Test Result(s) Please refer to the following page(s).

Conclusion

Tested Sample	According to standard/directive	Result
Submitted Sample	RoHS Directive 2011/65/EU with amendment (EU) 2015/863	PASS
	Client's limit- Phthalates	PASS



Hill Zheng

Hill Zheng
Technical Manager

Date Feb. 24, 2023

No. R393381894

Centre Testing International Group Co., Ltd.
CTI Building, Xing Dong Community, Xin'an Sub-district, Bao'an District, Shenzhen City, Guangdong Province, P.R. China

Test Report

Report No. A2230061776101006

Page 2 of 9

Test Method

Tested Item(s)	Test Method	Measured Equipment(s)
Lead (Pb)	IEC 62321-5:2013	ICP-OES
Cadmium (Cd)	IEC 62321-5:2013	ICP-OES
Mercury (Hg)	IEC 62321-4:2013+AMD1:2017 CSV	ICP-OES
Hexavalent Chromium (Cr(VI))	IEC 62321-7-2:2017 and/or determination of Total Chromium by IEC 62321-5:2013	UV-Vis/ICP-OES
Polybrominated Biphenyls (PBBs)	IEC 62321-6:2015	GC-MS
Polybrominated Diphenyl Ethers (PBDEs)	IEC 62321-6:2015	GC-MS
Phthalates (DBP, BBP, DEHP, DIBP)	IEC 62321-8:2017	GC-MS
Fluorine (F)	Refer to EN 14582:2016	IC
Chlorine (Cl)	Refer to EN 14582:2016	IC
Bromine (Br)	Refer to EN 14582:2016	IC
Iodine (I)	Refer to EN 14582:2016	IC
Phthalates	Refer to EN 14372:2004(E)	GC-MS

Test Report

Report No. A2230061776101006

Page 3 of 9

Test Result(s)

Tested Item(s)	Result	MDL	Limit
	006		
Lead (Pb)	N.D.	2 mg/kg	1000 mg/kg
Cadmium (Cd)	N.D.	2 mg/kg	100 mg/kg
Mercury (Hg)	N.D.	2 mg/kg	1000 mg/kg
Hexavalent Chromium (Cr(VI))	N.D.	8 mg/kg	1000 mg/kg

Tested Item(s)	Result	MDL	Limit
	006		
Polybrominated Biphenyls (PBBs)			
Monobromobiphenyl	N.D.	5 mg/kg	1000 mg/kg
Dibromobiphenyl	N.D.	5 mg/kg	
Tribromobiphenyl	N.D.	5 mg/kg	
Tetrabromobiphenyl	N.D.	5 mg/kg	
Pentabromobiphenyl	N.D.	5 mg/kg	
Hexabromobiphenyl	N.D.	5 mg/kg	
Heptabromobiphenyl	N.D.	5 mg/kg	
Octabromobiphenyl	N.D.	5 mg/kg	
Nonabromobiphenyl	N.D.	5 mg/kg	
Decabromobiphenyl	N.D.	5 mg/kg	

Tested Item(s)	Result	MDL	Limit
	006		
Polybrominated Diphenyl Ethers (PBDEs)			
Monobromodiphenyl ether	N.D.	5 mg/kg	1000 mg/kg
Dibromodiphenyl ether	N.D.	5 mg/kg	
Tribromodiphenyl ether	N.D.	5 mg/kg	
Tetrabromodiphenyl ether	N.D.	5 mg/kg	
Pentabromodiphenyl ether	N.D.	5 mg/kg	
Hexabromodiphenyl ether	N.D.	5 mg/kg	
Heptabromodiphenyl ether	N.D.	5 mg/kg	
Octabromodiphenyl ether	N.D.	5 mg/kg	
Nonabromodiphenyl ether	N.D.	5 mg/kg	
Decabromodiphenyl ether	N.D.	5 mg/kg	

Test Report

Report No. A2230061776101006

Page 4 of 9

Tested Item(s)	Result	MDL	Limit
	006		
Phthalates (DBP, BBP, DEHP, DIBP)			
Dibutyl phthalate (DBP) CAS#:84-74-2	N.D.	50 mg/kg	1000 mg/kg
Butyl benzyl phthalate (BBP) CAS#:85-68-7	N.D.	50 mg/kg	1000 mg/kg
Di-(2-ethylhexyl) phthalate (DEHP) CAS#:117-81-7	N.D.	50 mg/kg	1000 mg/kg
Diisobutyl phthalate (DIBP) CAS#:84-69-5	N.D.	50 mg/kg	1000 mg/kg

Tested Item(s)	Result	MDL
	006	
Fluorine (F)	N.D.	10 mg/kg
Chlorine (Cl)	N.D.	10 mg/kg
Bromine (Br)	N.D.	10 mg/kg
Iodine (I)	N.D.	10 mg/kg

Tested Item(s)	Result	MDL	Client's limit
	006		
Phthalates			
Dibutyl phthalate (DBP) CAS#:84-74-2	N.D.	30 mg/kg	300 mg/kg
Butyl benzyl phthalate (BBP) CAS#:85-68-7	N.D.	30 mg/kg	300 mg/kg
Di-(2-ethylhexyl) phthalate (DEHP) CAS#:117-81-7	N.D.	30 mg/kg	300 mg/kg
Diisobutyl phthalate (DIBP) CAS#:84-69-5	N.D.	30 mg/kg	300 mg/kg
Total (DBP + BBP+ DEHP+ DIBP)	N.D.	/	500 mg/kg
Di-n-octyl phthalate (DNOP) CAS#:117-84-0	N.D.	30 mg/kg	300 mg/kg
Di-isononyl phthalate (DINP) CAS#:28553-12-0,68515-48-0	N.D.	50 mg/kg	300 mg/kg
Di-iso-decyl phthalate (DIDP) CAS#:26761-40-0,68515-49-1	N.D.	50 mg/kg	300 mg/kg
Total (DNOP + DINP + DIDP)	N.D.	/	500 mg/kg
Dimethyl phthalate (DMP) CAS#:131-11-3	N.D.	30 mg/kg	300 mg/kg

Test Report

Report No. A2230061776101006

Page 5 of 9

Tested Item(s)	Result	MDL	Client's limit
	006		
Diethyl phthalate (DEP) CAS#:84-66-2	N.D.	30 mg/kg	Not Detected
Dipentyl phthalate (DPP/DPENP) CAS#:131-18-0	N.D.	30 mg/kg	300 mg/kg
Dicyclohexyl phthalate (DCHP) CAS#:84-61-7	N.D.	30 mg/kg	300 mg/kg
Diisooctyl phthalate (DIOP) CAS#:27554-26-3	N.D.	50 mg/kg	300 mg/kg
Di-n-hexyl phthalate (DNHP/DHEXP) CAS#:84-75-3	N.D.	30 mg/kg	300 mg/kg
Bis(2-methoxyethyl) phthalate (DMEP) CAS#:117-82-8	N.D.	30 mg/kg	500 mg/kg
Diisopentylphthalate (DIPP) CAS#:605-50-5	N.D.	50 mg/kg	500 mg/kg
Diphenyl phthalate (DPhP) CAS#:84-62-8	N.D.	30 mg/kg	300 mg/kg
^① 1,2-Benzenedicarboxylic acid, di-(C7-11)-branched and linear alkyl esters (DHNUP) CAS#:68515-42-4	N.D.	50 mg/kg	500 mg/kg
^① 1,2-Benzenedicarboxylic acid, di-C6-8-branched alkyl esters, C7-rich (DIHP) CAS#:71888-89-6	N.D.	50 mg/kg	500 mg/kg
^① 1,2-Benzenedicarboxylic acid, dihexyl ester, branched and linear (NHIHP) CAS#:68515-50-4	N.D.	50 mg/kg	500 mg/kg
Di-2-propylheptyl phthalate (DPHpP) CAS#:53306-54-0	N.D.	30 mg/kg	300 mg/kg

Sample/Part Description

No.	CTI Sample ID	Description
1	006	Black solid with silvery covering layer(Tested as a whole)

Test Report

Report No. A2230061776101006

Page 6 of 9

Remark: The sample(s) had been dissolved totally tested for Lead, Cadmium, Mercury.

-Information Statement: Different sample name with different buyer.

-MDL = Method Detection Limit

-N.D. = Not Detected (<MDL)

-mg/kg = ppm = parts per million

-1000 mg/kg = 0.1%

-^①: In view of the substances are established as UVCB substances (substances of unknown or variable composition, complex reaction products or biological materials) consisting of different and variable constituents, the test results are calculated based on the main constituents of the representative compounds for substances.

-The sample(s) was tested as a whole, because it's impossible to disassemble or separate it by current equipment and technology. The result(s) shown on this report may be different from the content of any homogeneous material.

MS
SHP 00
1
2
3
4
5

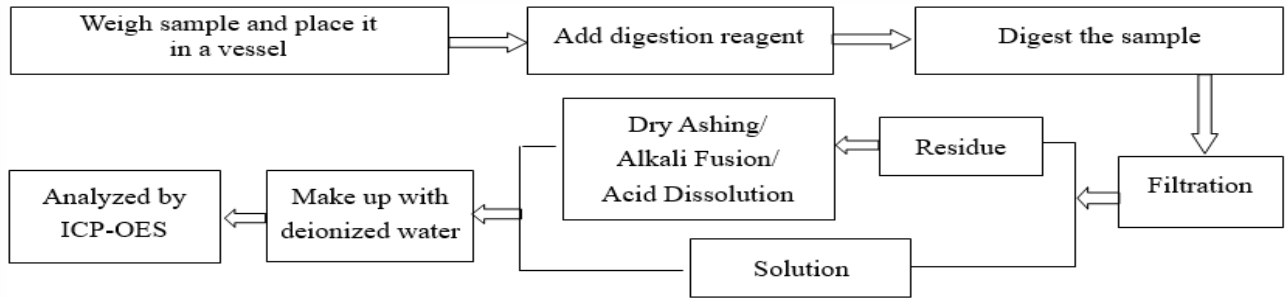
Test Report

Report No. A2230061776101006

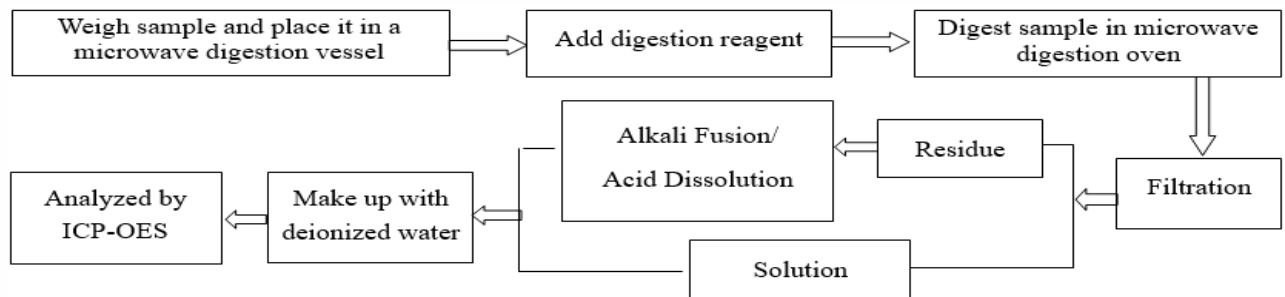
Page 7 of 9

Test Process

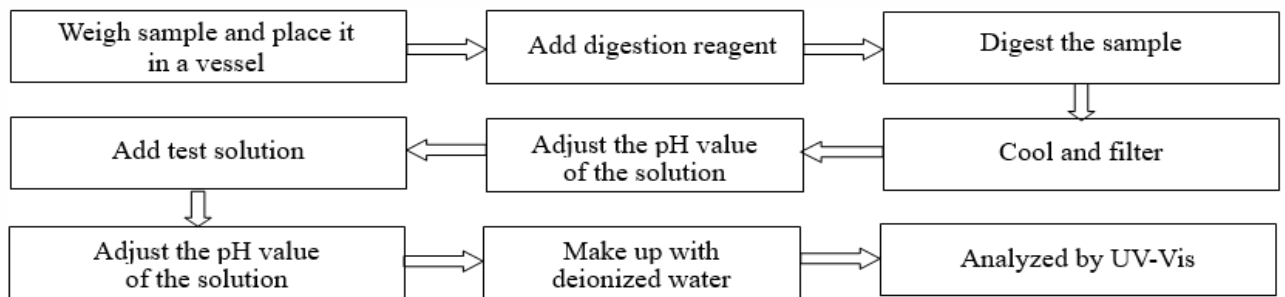
1. Lead (Pb), Cadmium (Cd), Chromium(Cr)



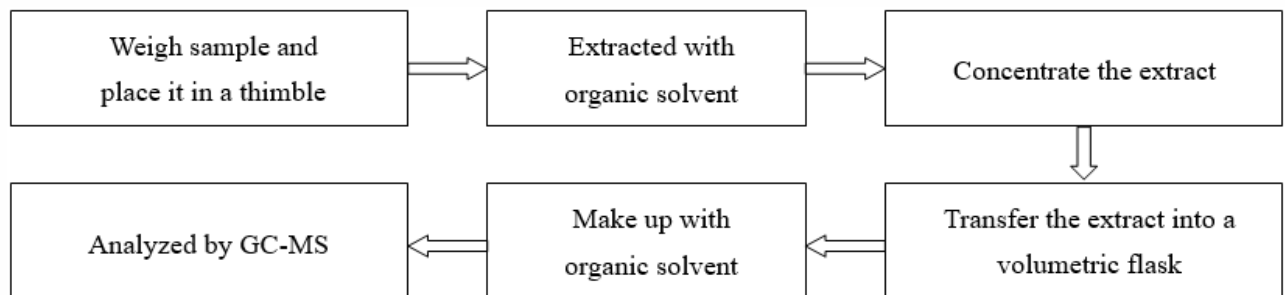
2. Mercury (Hg)



3. Hexavalent Chromium (Cr(VI))



4. Polybrominated Biphenyls (PBBs), Polybrominated Diphenyl Ethers (PBDEs)

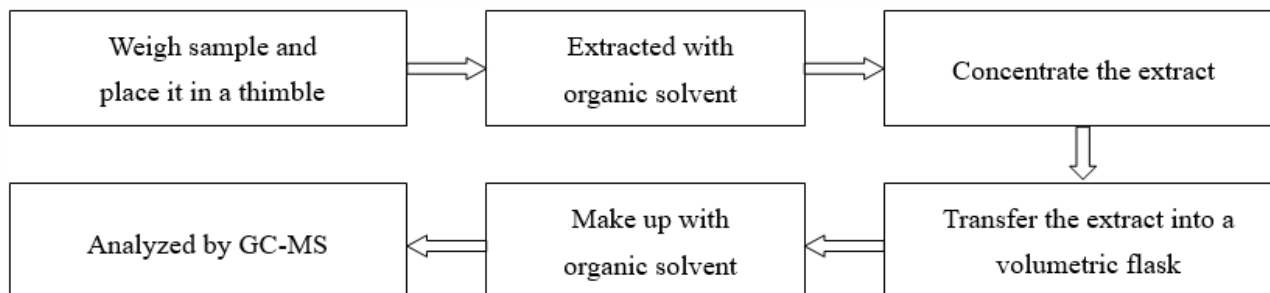


Test Report

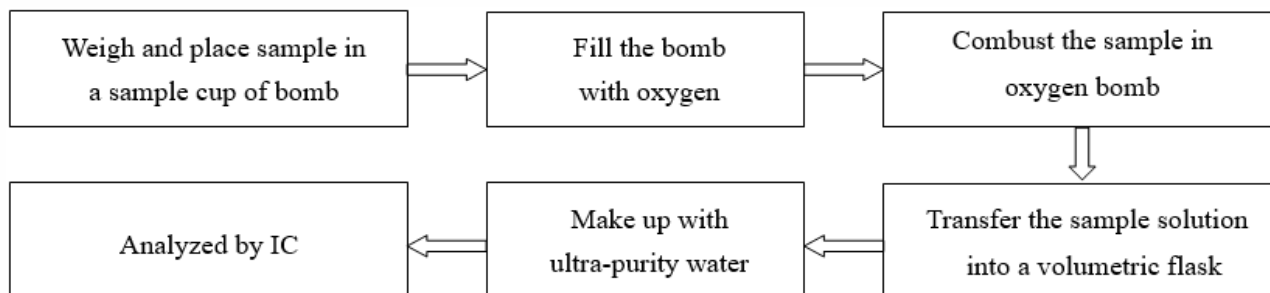
Report No. A2230061776101006

Page 8 of 9

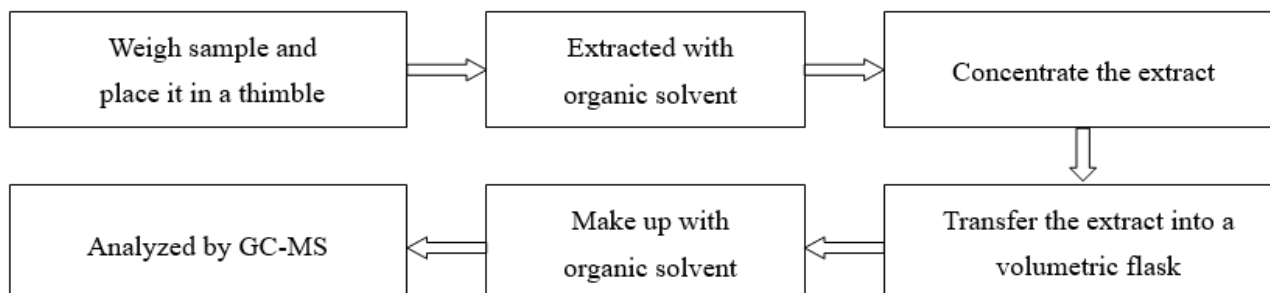
5. Phthalates (DBP, BBP, DEHP, DIBP)



6. Fluorine (F), Chlorine (Cl), Bromine (Br), Iodine (I)



7. Phthalates

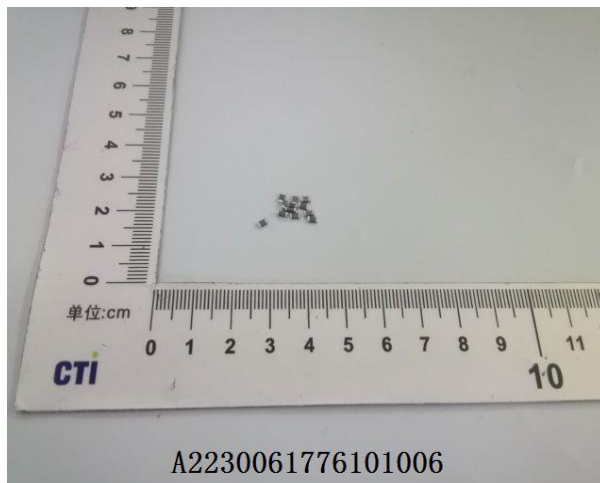


Test Report

Report No. A2230061776101006

Page 9 of 9

Photo(s) of the sample(s)



Statement:

1. This report is considered invalid without approved signature, special seal and the seal on the perforation;
2. The Company Name shown on Report and Address, the sample(s) and sample information was/were provided by the applicant who should be responsible for the authenticity which CTI hasn't verified;
3. The result(s) shown in this report refer(s) only to the sample(s) tested;
4. Without written approval of CTI, this report can't be reproduced except in full;
5. In case of any discrepancy between the English version and Chinese version of the testing reports (if generated), the Chinese version shall prevail.

*** End of Report ***