

# SMD Series 3-pin Inductors



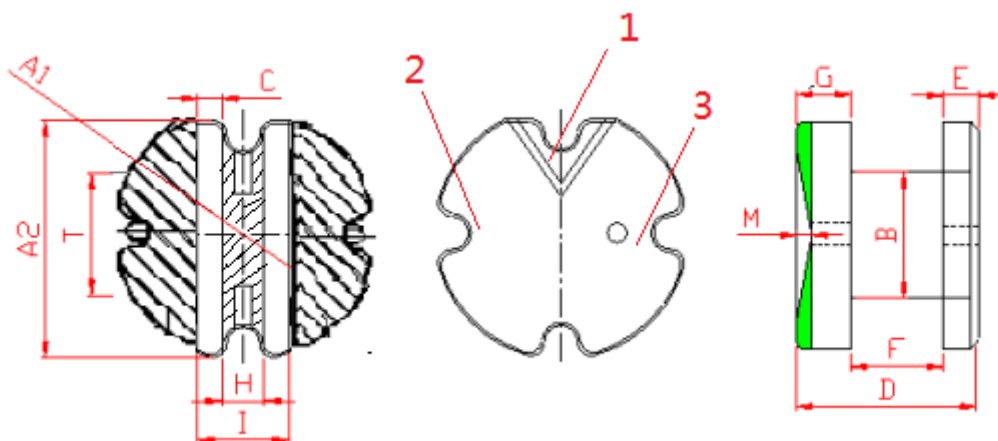
## FEATURES

- ROHS, Halogen free and REACH Compliance
- Unshielded power inductor
- Various package size and wide inductance range.

## APPLICATIONS

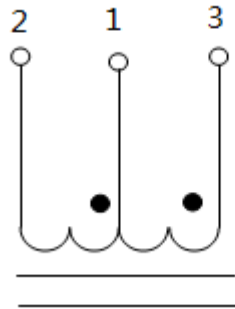
- Graphic cards, cordless phone.
- Buzzer alarm
- Personal computers, Humidifier

## SHAPE AND DIMENSIONS



Part Number	Dimensions (mm)											
	ΦA1	ΦA2	B	D	E	F	G	C	H	T	I	M
SMD5845	5.9	5.2	1.5	4.5	1.00	1.20	1.20	1.04	1.04	3.02	1.50	0.30
	±	±	±	±	±	±	±	±	±	±	±	±
	0.15	0.15	0.15	0.15	0.10	0.10	0.15	0.10	0.10	0.10	0.10	0.10
SMD8050	8.0	7.06	3.00	5.2	1.00	2.60	1.60	1.04	1.04	3.52	3.30	0.33
	±	±	±	±	±	±	±	±	±	±	±	±
	0.15	0.15	0.15	0.15	0.10	0.15	0.15	0.10	0.10	0.10	0.10	0.10

## ELECTRICAL DIAGRAM



Such as: 1.2.3 is the winding foot position, 1 is the common foot in the middle, the sensitivity of 1-2 feet is 25uH, and the sensitivity of 1-3 feet is 800uH.

## PRODUCT IDENTIFICATION

SMD   8050   -   4R7   M  
 ①            ②            ③            ④

- ① Series name
- ② Dimensions D×T
- ③ Inductance: R47-0.47uH   4R7-4.7uH   470-47uH
- ④ Tolerance: K: ±10%   M: ±20%   N: ±30%

**Remark: Design as Customer's request specification.**